

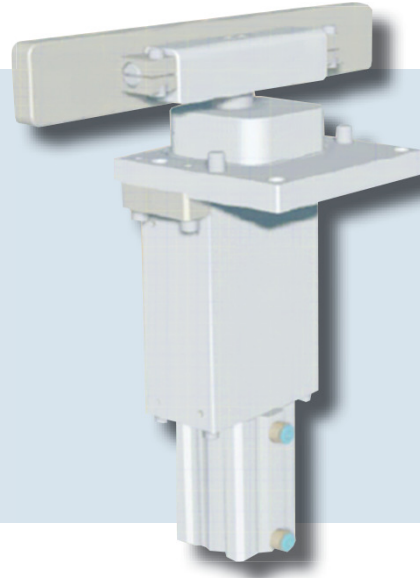
New Lam Research Inner & Outer door Assemblies

PCB upgrade part number: 853-012200-001E

esl 
service is solution



- Improved uptime
- Improved reliability
- Smaller size & less weight
- Reduced cost of ownership
- Drop in installation
- Easy Bellow change
- Plug and Play design



ESL has found an alternative inner and outer door mechanism which replaces the Lam original doors for a new improved design. This design has a proven quality and simplified robust structure improving the lifetime of the assembly. The new door is designed for Form, Fit and Function to fit into the Lam loadlock without any modification. The new simplified door was installed in a production site for evaluation and has passed without failure. The easy to adjust alignment of the door adds a positive note for maintenance crews. The door is designed for high lifetime and comes with 6 months warranty. The Inner and the Outer door can be replaced by this single assembly, reducing inventory. The lightweight door is compact and handy, giving more room for maintenance and eases up installation and adjustments.

→ **Models affected**

All Lam Research tools up to Alliance systems
Rainbow 4400 series; Rainbow 4500 series
TCP series; Alliance series

→ **No additional modifications needed**

→ **Suitable for door assemblies with part number
853-01200-00X**

→ **Easy alignment**

The Door assembly is easy to adjust and will be preadjusted in our cleanroom installed tools. Needed application (Rainbow, TCP or Alliance systems) is needed prior to shipment.

→ **Contents of the retrofit kit**

The door comes with all needed cables,
door plate and screws.

→ **To receive further information or technical data,
please contact us by mail or phone.**



© ESL Elektronik GmbH is a ISO 9001 qualified supplier for semiconductor and other hitech equipment.
Our calibrations are traceable to NIST and are performed in a class 100 cleanroom. Please contact our office for technical assistance.

ESL Elektronik GmbH • Lehnerstrasse 2 • 85630 Grasbrunn Germany • Tel.: +49-89-4207969-0 • Fax: +49-89-4207969-10
Email: info@esl-elektronik.de • www.esl-elektronik.de