

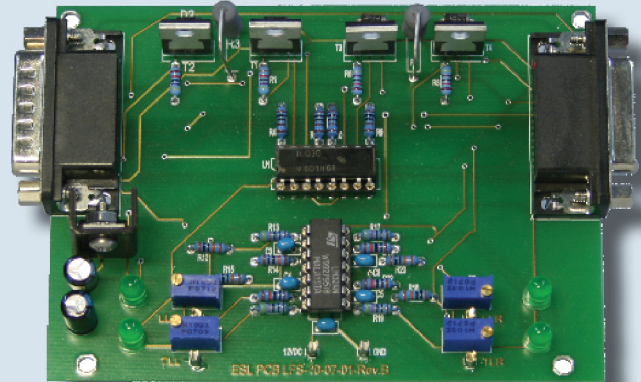
LoFat 4500 Autotune match Electronic Endstop PCB

PCB upgrade part number: 810-25903-001E

esl
service is solution



- Improved uptime
- Improved matching network reliability
- Improved adjustment control
- Reduced cost of ownership
- Drop in installation
- Calibration only needed once
- Plug and Play design



The Autotune matching network assembly is prone to failure when the tuning coils drive into the rubber endstops. The power is not switched off and the motors, the belts, the potentiometers and the leadscrews of the spindles, are all subject to forces which they were not designed to handle. This electronic observation control box continuously monitors the tuning slides and the fixed end stop positions. The electronic endstop retrofit kit has variable settings to allow the user to program the fixed end stops of both slides. Visual LED's will allow the user to easily adjust the endstops. The Electronic endstop retrofit kit is simply plugged into the existing cables branch of the Autotune. This retrofit kit will improve the reliability of the autotune and reduce the number of failures caused by overrunning the endstops.

→ Model affected

All LAM Research Rainbow oxide systems using the LoFat Autotune matching network

→ No additional power source needed

→ Suitable for all matches with the part number 853-025903-00X

→ Easy alignment

The PCB is easy to adjust. However, we recommend that the first installation and adjustment is made onsite from an ESL technician.

→ Installation guide

An installation guide eases up the first installation and the needed adjustments.

→ Contents of the retrofit kit

The retrofit comes with the PCB, all needed cables, screws, frames and the installation guide.

→ To receive further information or technical data, please contact us by mail or phone.



© ESL Elektronik GmbH is a ISO 9001 qualified supplier for semiconductor and other hitech equipment. Our calibrations are tracable to NIST and are performed in a class 100 cleanroom. Please contact our office for technical assistance.

ESL Elektronik GmbH • Lehnerstrasse 2 • 85630 Grasbrunn Germany • Tel.: +49-89-4207969-0 • Fax: +49-89-4207969-10
Email: info@esl-elektronik.de • www.esl-elektronik.de