

Mattson Aspen II

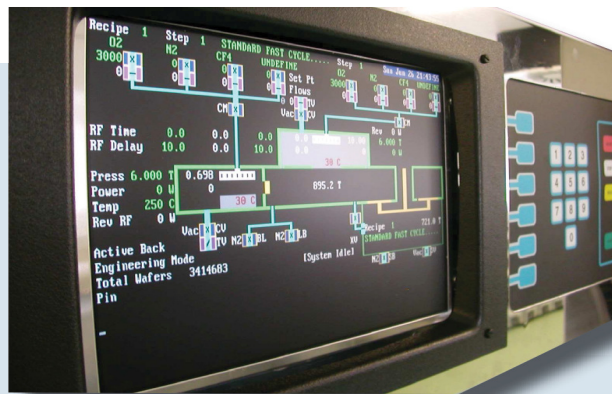
9 inch colour TFT Upgrade

Upgrade part number: 934-16004-00E

esl
service is solution



- Improved uptime
- Improved machine control
- Improved screen overview
- Drop in installation
- Plug and Play design



A new LCD retrofit kit is available for the replacement of operator CRT monitors for the Mattson Aspen II systems. These CRT monitors are difficult to purchase and are being phased out of the program by a number of different manufactures. The LCD TFT flat screen is a suitable and reliable replacement for this CRT.

The LCD monitor is a VGA-TFT display with 800 x 600 pixel display. Instead of the monochrome picture a brilliant colour picture is now shown. The picture quality is greatly improved, the sharpness and brightness of the screen has been optimized to allow the user view the screen without discomfort. The LCD has a much longer lifetime than a CRT. A frame has been designed to allow easy installation into the existing chassis.

- **Model affected**
All Mattson Aspen II systems
- **No additional power source needed**
- **Designed to replace all CRT's with the part number 934-16004-00**
- **Easy installation**
The TFT is easy to install. The included frame directly fits into the old chassis. The power comes from an already existing plug.
- **Installation guide**
An installation guide eases up the first installation and the needed adjustments.
- **Contents of the retrofit kit**
The retrofit comes with the TFT, the support frame, the installation guide and all needed cables
- **To receive further information or technical data, please contact us by mail or phone.**



© ESL Elektronik GmbH is a ISO 9001 qualified supplier for semiconductor and other hitech equipment. Our calibrations are traceable to NIST and are performed in a class 100 cleanroom. Please contact our office for technical assistance.

ESL Elektronik GmbH • Lehnerstrasse 2 • 85630 Grasbrunn Germany • Tel.: +49-89-4207969-0 • Fax: +49-89-4207969-10
Email: info@esl-elektronik.de • www.esl-elektronik.de